

Service
Service
Service



Service Manual



CONTENTS

Block diagram 1-1
 Wiring diagram 2-2

Circuit Diagram - Main board

 CD & Display part 3-1
 Tuner & Power part..... 4-1
 USB control part 5-1

layout diagram - Main board

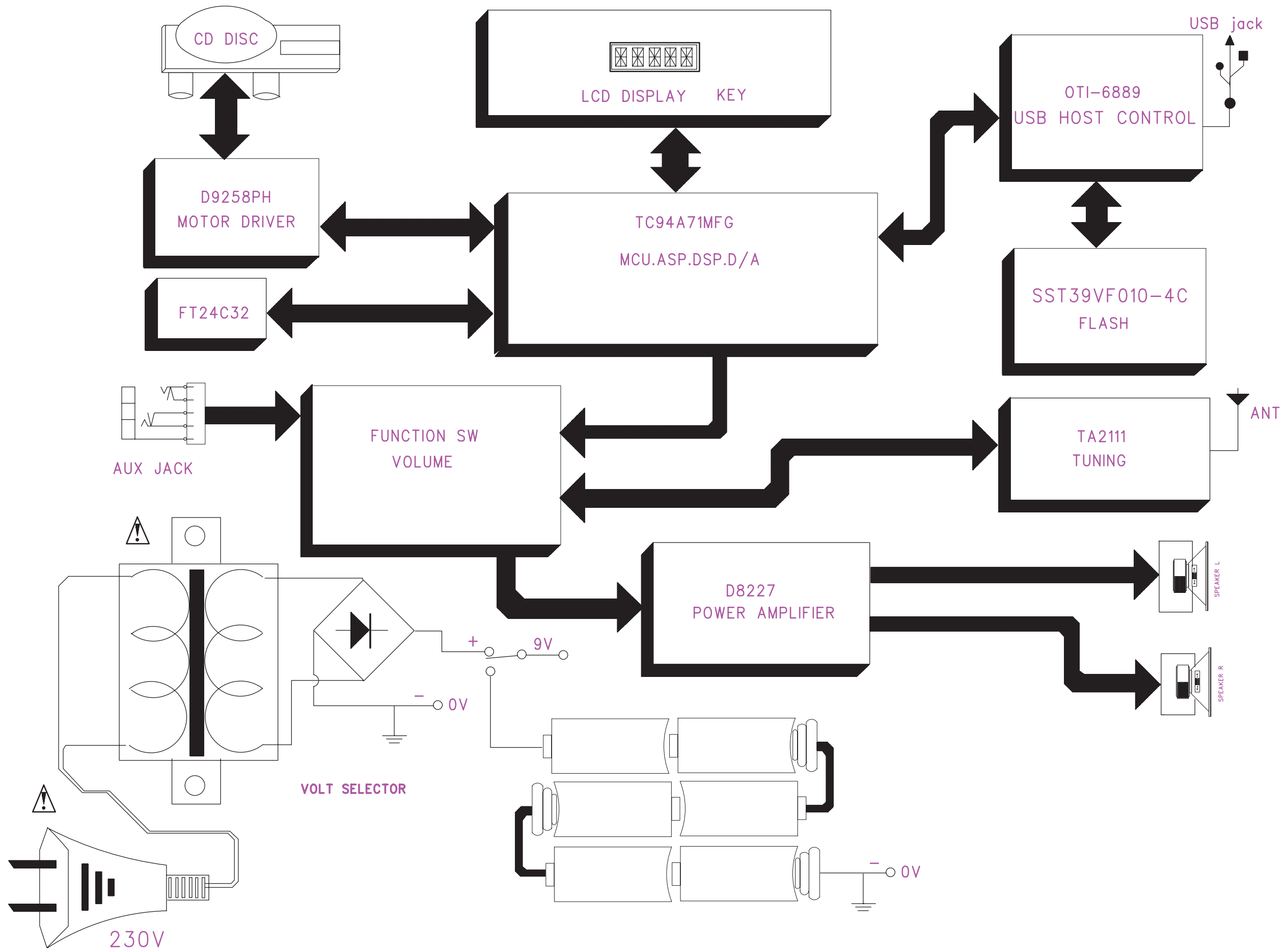
 Component side view 6-1
 Copper side view 6-2

Service parts list 7-1

© Copyright 2008 Philips Consumer Electronics B.V. Eindhoven, The Netherlands
 All rights reserved. No part of this publication may be reproduced, stored in a retrieval system or transmitted, in any form or by any means, electronic, mechanical, photocopying, or otherwise without the prior permission of Philips.



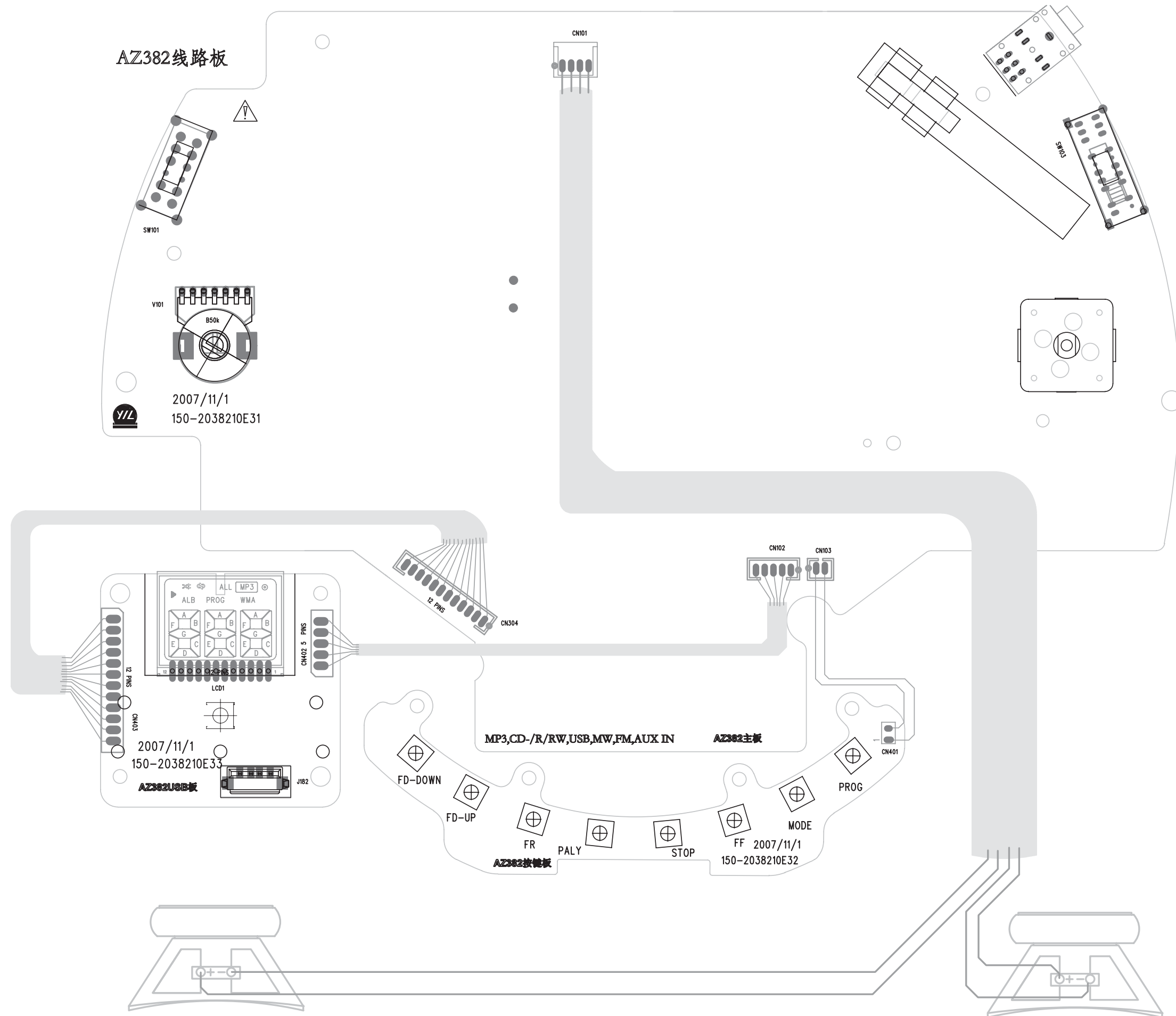
SET BLOCK DIAGRAM



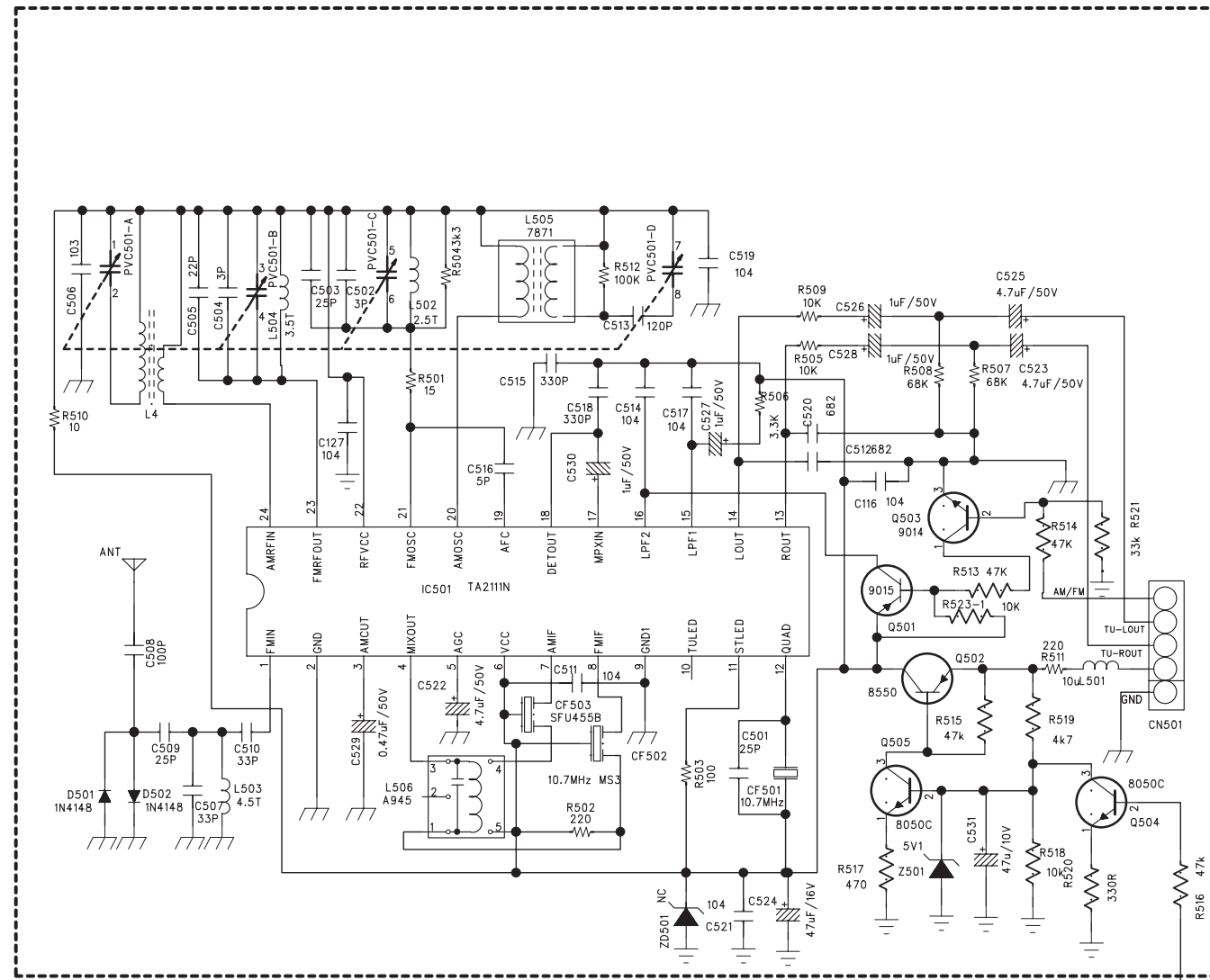
SET WIRING DIAGRAM

2 - 1

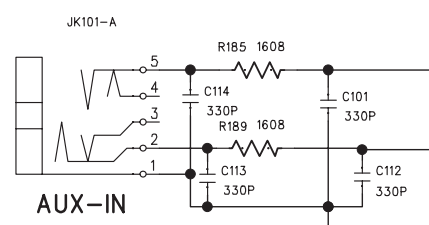
2 - 1



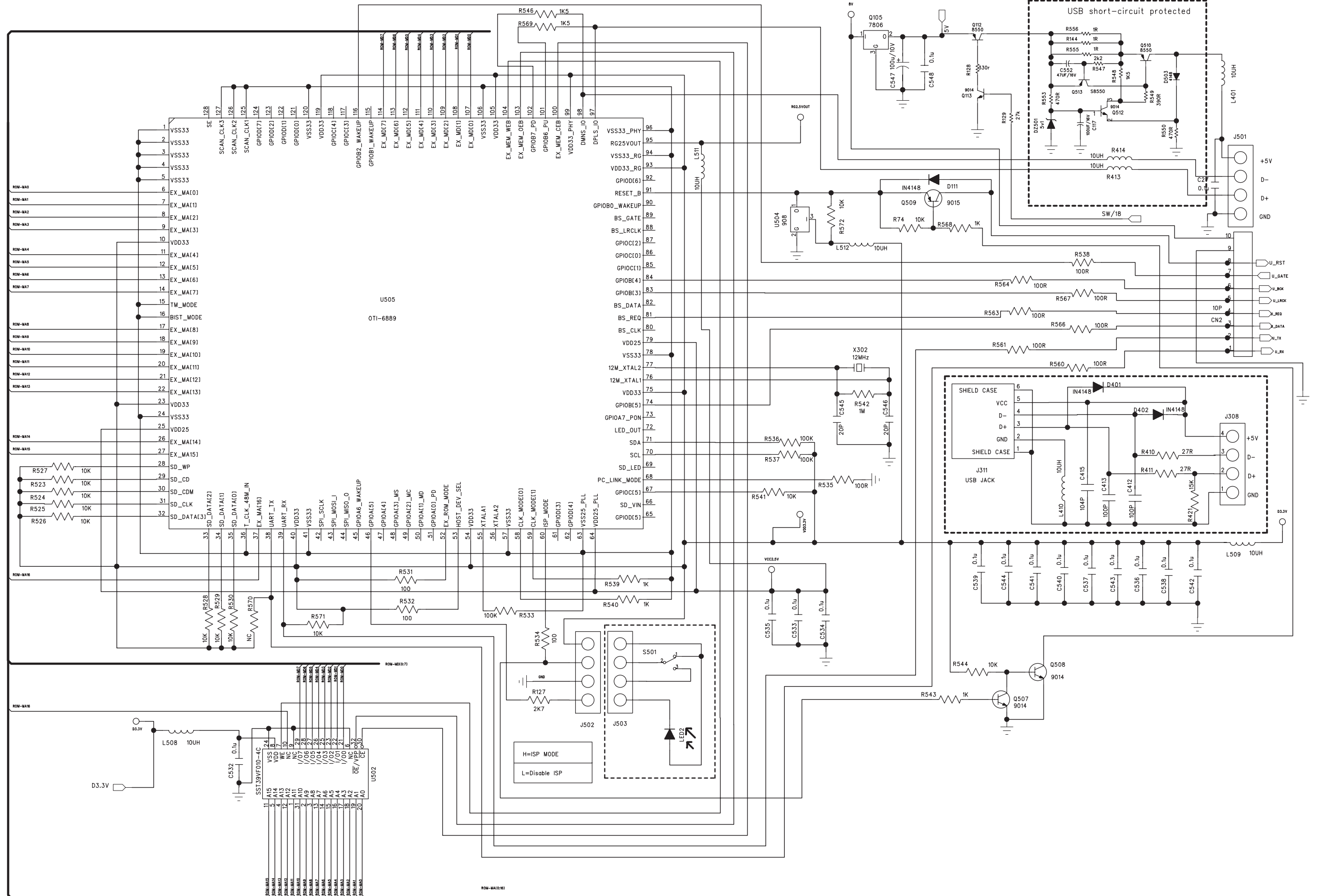
**CIRCUIT DIAGRAM - MAIN BOARD
TUENR & POWER PART**



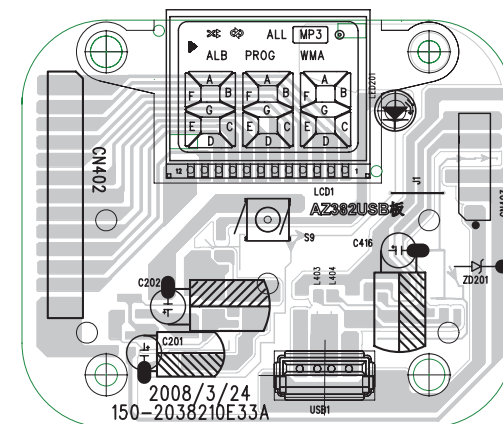
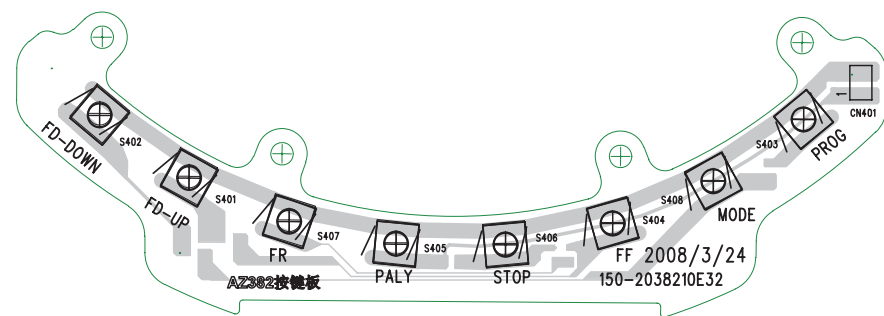
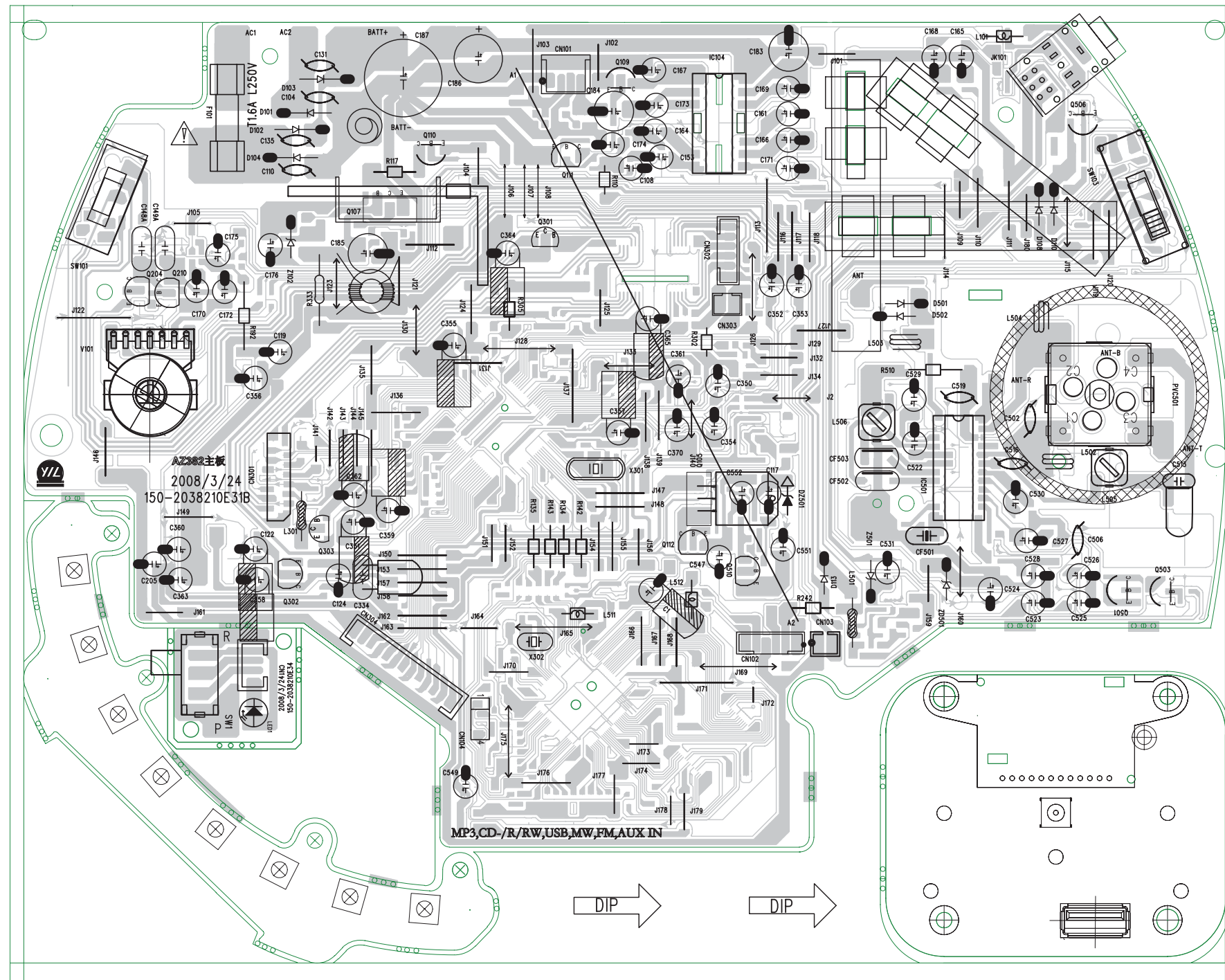
| TA2111 | | | |
|--------|------|-------|--------|
| 16pin | | 15pin | |
| VCC | OPEN | VCC | OPEN |
| AM | FM | MONO | STEREO |



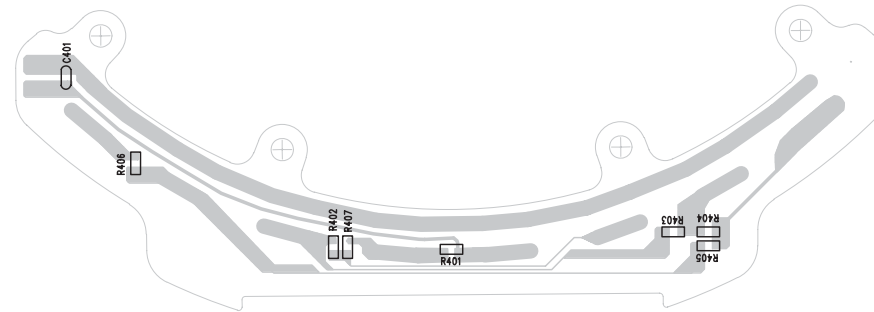
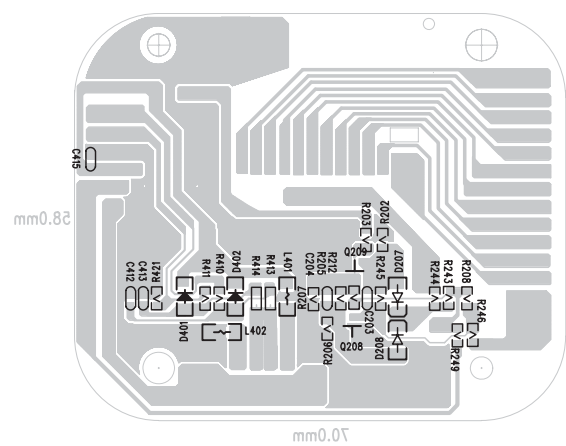
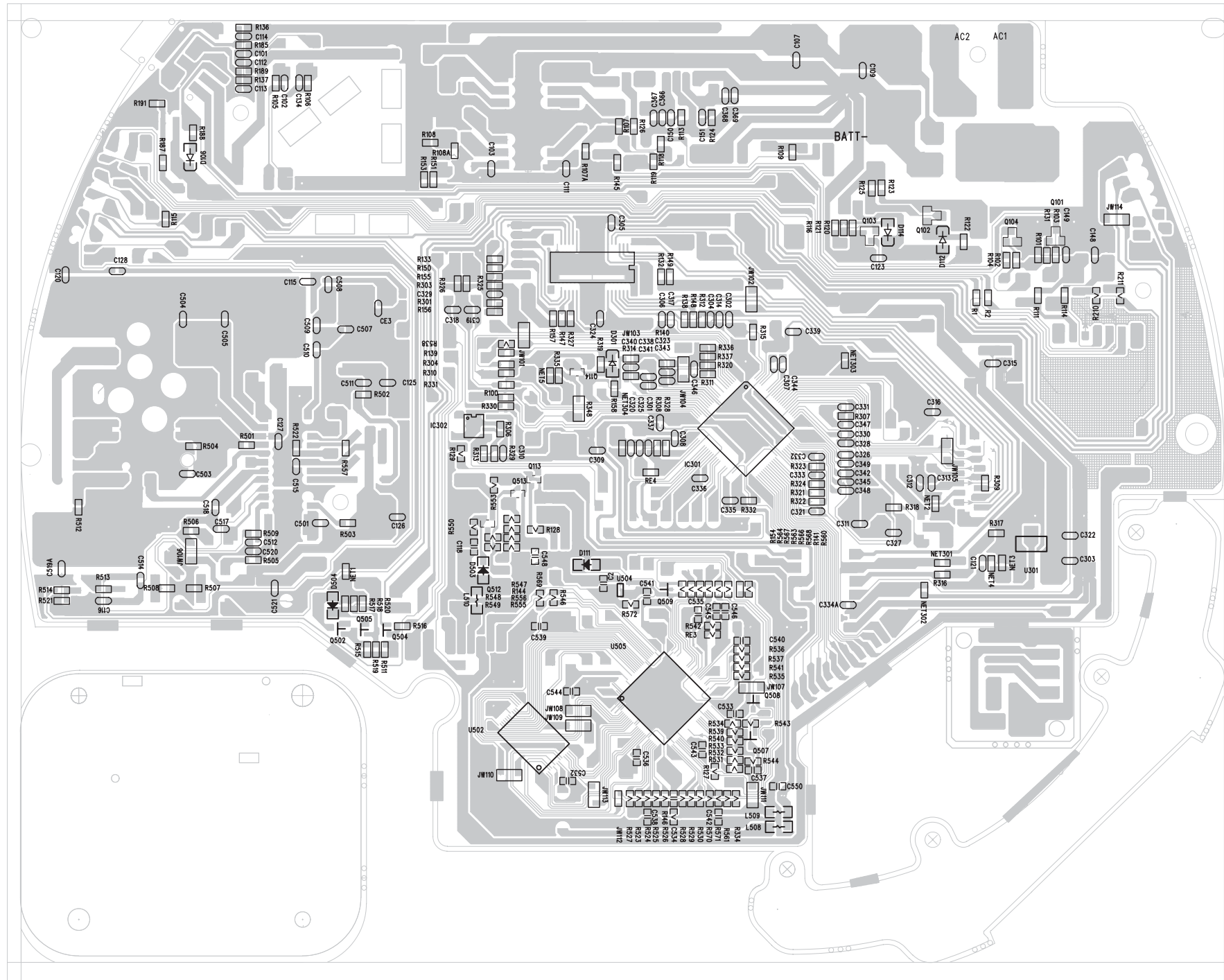
CIRCUIT DIAGRAM - MAIN BOARD USB CONTROL PART



LAYOUT DIAGRAM - MAIN BOARD COMPONENT SIDE VIEW



LAYOUT DIAGRAM - MAIN BOARD COPPER SIDE VIEW



mm0.25

mm0.07

Service parts list

| | | |
|----|--------------|---------------------------------------|
| 10 | 994000004727 | 7831 GEAR STAND (MODE:0.8) |
| 11 | 996510010493 | AZ102 CD DOOR SPING |
| 12 | 996510016909 | TRAN. VDE,EML-2216VT(-/61/12) |
| 12 | 996510022741 | AZ382 TRAN.UL EI-41 (-/96) |
| 13 | 996510016927 | AC POWE SOCKET VDE TC08-115-02 (-/61) |
| 13 | 994000004086 | AC POWER SOCKET (/12/96) |
| 14 | 994000004782 | FUSE 50T D5X20 1.6A 250V(S.B.) |
| 15 | 996510010495 | BATTERY DOOR |
| 20 | 996510006698 | SPEAKER 3" 8ohm 1W,ROUND SIL |
| 3 | 996510010490 | ROD ANTENNA 5 SEG, 360,430mm |
| 4 | 996510010491 | CD MECHANISM SANYO DA11B3VF |
| 5 | 996510016926 | CD DOOR |
| 6 | 994000004061 | 7871 CD RUBBER CUSHION BLACK |
| 7 | 994000005189 | 7871 CD RUBBER CUSHION PINK |
| 8 | 996510006691 | 7871 CD PICK UP DUSTCOVER |
| 9 | 994000004726 | 7831 GEAR (MODE:0.8) |
| 2 | 996510016759 | VDE-APP AC CORD LINE,W/SOCKET (-/61) |
| 2 | 996510010496 | VDE-APP AC CORD LINE BLK (-/12) |
| 2 | 996510022742 | AC CORD LINE BLK L=1500mm(-/96) |

Note: Only these parts mentioned in the list are normal service parts.